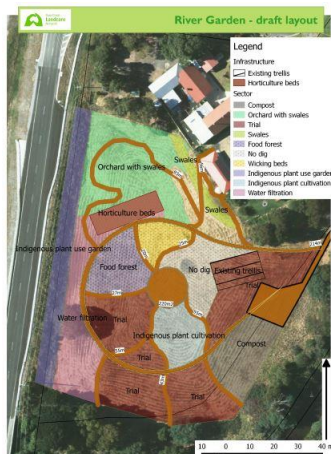


Growing Community, Growing Food at the River Garden Hands on learning days



Come along and 'learn by doing' to help establish this great community space. Expert horticulturalist Jarrod Ruch will lead a series of four practical hands on days, sharing his wealth of knowledge on sustainably growing food at the River Garden in Bass this year.

Event Details

Venue: The River Garden at Bass behind the Bass Coast Landcare Network Office, 2-4 Bass School Road, Bass. Look out for the Landcare event sign.
Google maps link: <https://goo.gl/maps/qqDYoqLX4UK2>

Time: 10.00 am to 3.00 pm with Free lunch provided

Date	Discussion Topics	Hands on
Saturday 24th March	Property management planning and land capability, Rotational grazing systems, promotion of pasture species diversity, Natural/biological soil improvement, non-chemical weed control methods, steaming, scythe, solarisation, newspaper and mulching.	Assisting with Sheet Mulching, solarisation, weeding trials.
Saturday 28th April	Crop diversification, Stacking and sequential rotation, Compost trials/teas – aerobic and anaerobic systems, Mineral additives, The making and use of biochar.	Compost Trials, making compost teas, planting.
Saturday 26th May	Alternative crop trials for a changing climate, including aquatic plants, aquaponics systems, fruit and nuts, Extending the seasons for crops, Novel crops, Pests and diseases.	Sheet Mulching, setting up new beds, planting,
Saturday 30th June	Shelterbelts – structure, succession, species selection, zones and sectors, Food forests, Bush food plants and indigenous cultural heritage, Trees on farms, Fire protection plantings.	Sheet Mulching, planting, food demonstrations.

Use this link to book your place:

<https://growingcommunitygrowingfoodattherivergarden.eventbrite.com.au>

Bookings Essential for equipment, tools, materials and catering purposes.

For further information: Please call or email Peter Baird from Bass Coast Landcare Network on 03 5678 2335, or peter.baird@basscoastlandcare.org.au



Bass Coast Landcare Network
Ph: 03 5678 2335
Em: landcare@nex.net.au
www.basscoastlandcare.org.au



Bass Coast
Landcare
Network

This project is supported by the Port Phillip and Westernport CMA, with funding from the Australian Government's National Landcare Program.