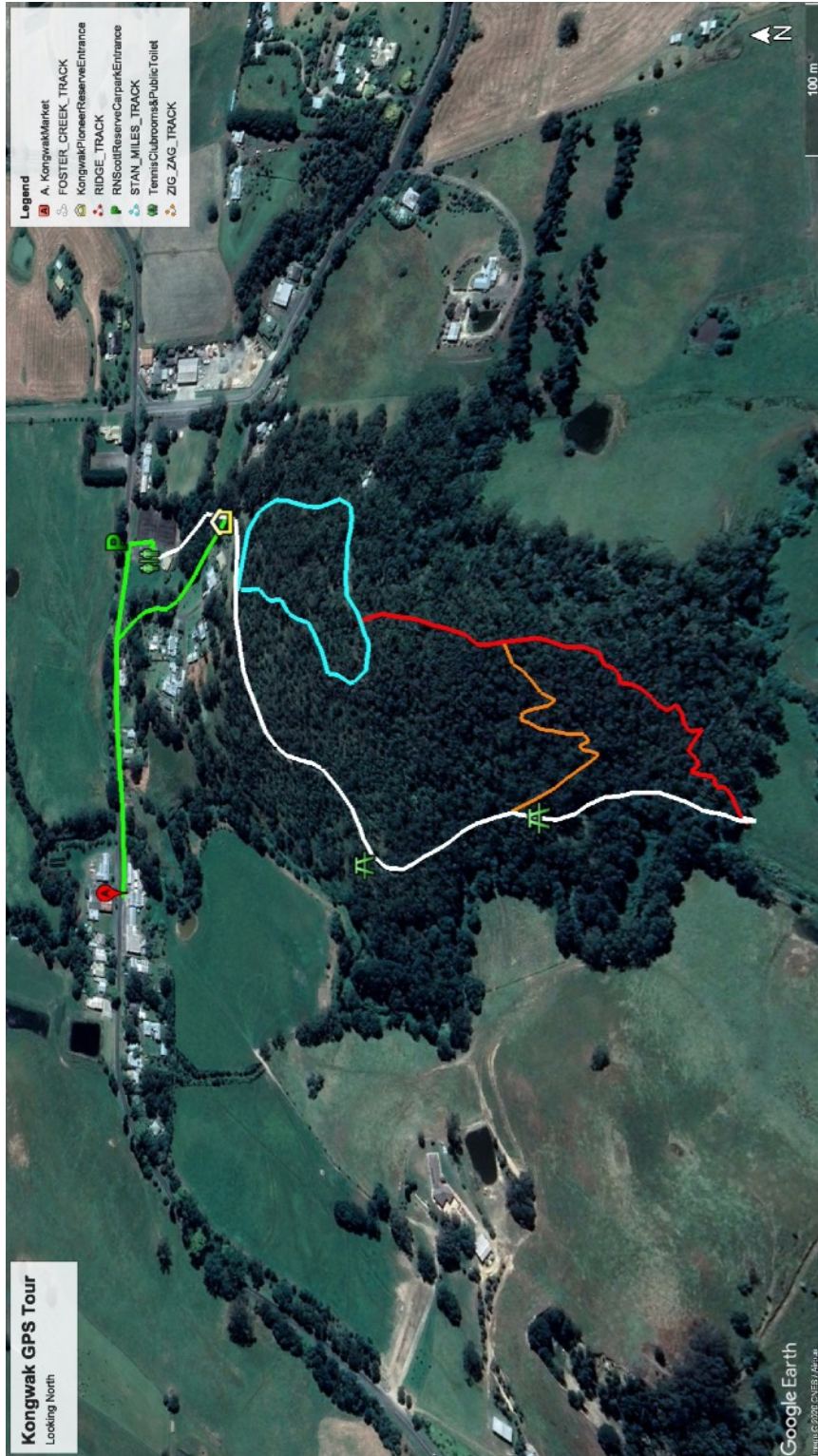


Kongwak Pioneer Reserve

Track Information

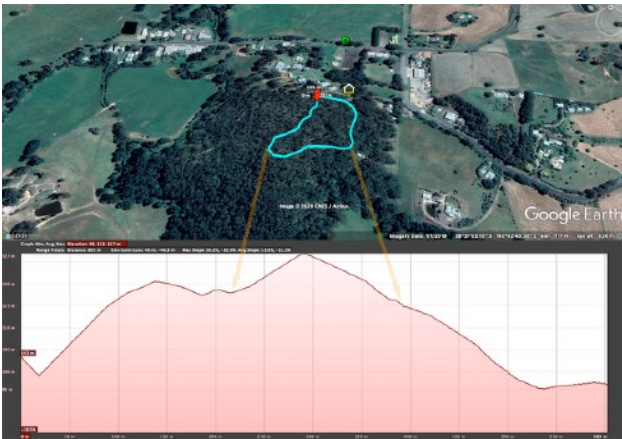


ELEVATION PROFILES



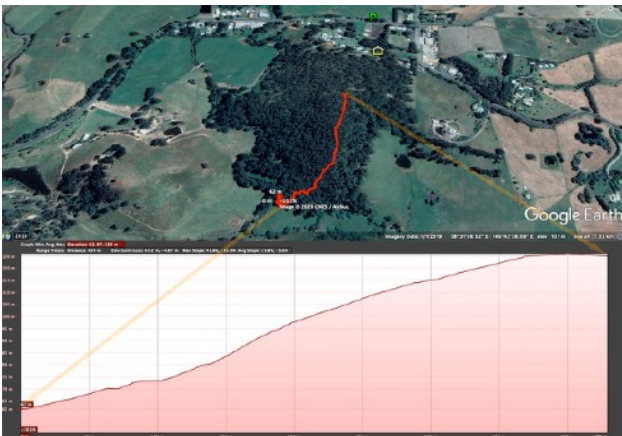
FOSTER CREEK TRACK

Distance: 884 metres
Highest point: 100m ASL
Lowest point: 62m ASL



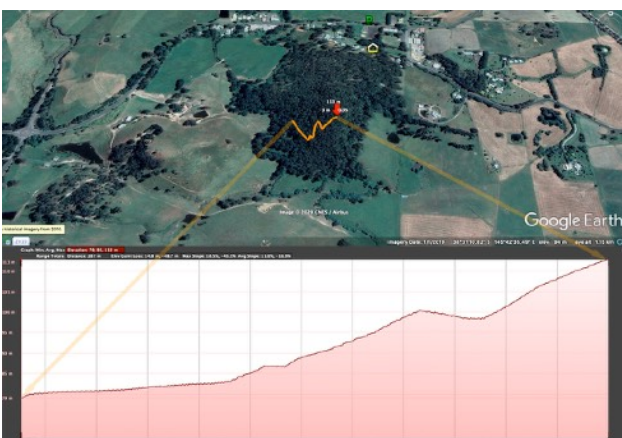
STAN MILES TRACK

Distance: 603 metres
Highest point: 127m ASL
Lowest point: 96m ASL



RIDGE TRACK

Distance: 429metres
Highest point: 126m ASL
Lowest point: 62m ASL



ZIGZAG TRACK

Distance: 287 metres
Highest point: 113m ASL
Lowest point: 79m ASL