

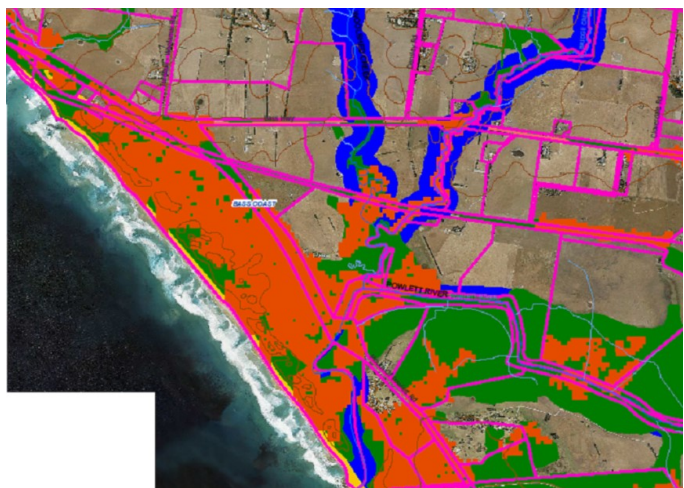
Bass Coast Biolinks Community Workshops

Bass Coast Shire Council is working on a Biodiversity Biolinks Plan to map areas of native bushland in the shire and identify linkages that will provide key environmental corridors.

We are working in partnership with DELWP and the WGCMA, who have mapped the health and location of native vegetation in the shire. They have also identified proposed biolinks to join these areas of native bushland.

The biolinks plan will guide future revegetation and remnant protection projects and provide a strategic approach by identifying where the greatest environmental return for investment exists.

We would like your feedback on these maps and invite you to a workshop to identify key linkages from the maps and provide advice on the opportunities and difficulties in seeing them established on the ground. There will be separate workshops for each region; Powlett, Anderson Inlet and Coastal Plains regions, Bass Valley and waterline communities and Phillip Island workshops.



Workshop Locations and Dates

Thursday 9th March 12.00 – 3.00pm Bass Valley and waterline communities at **Kernot Hall**, with Pizza from the Kernot Store

Friday 17th March 12.00 – 3.00pm Powlett and Anderson Inlet and Coastal Plains regions, at the **State Coal Mine, Wonthaggi**

Wednesday 29th March 12.00-3.00pm Phillip Island at the **Phillip Island Winery 414 Berrys beach Rd**

RSVP

<https://www.eventbrite.com.au/e/bass-coast-biolinks-workshops-tickets-32277211007>

Email david.bateman@basscoastlandcare.org.au or call 0356782335 or 0488399151 . A light lunch will be served at each event. Please advise of dietary requirements.



Environment,
Land, Water
and Planning