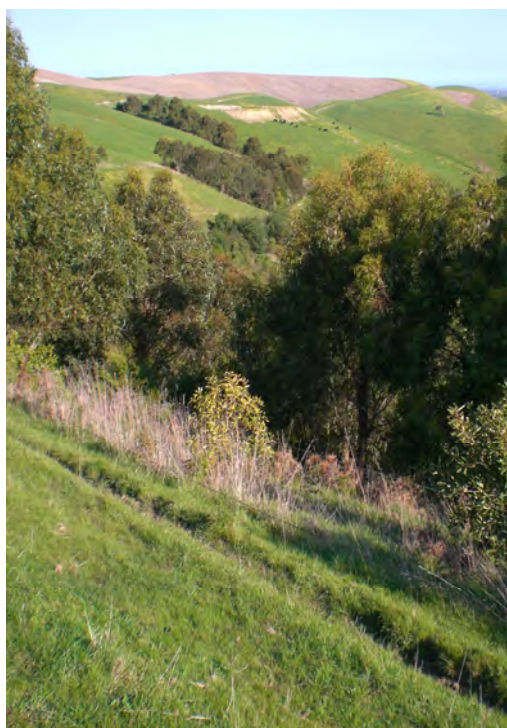


# Fact sheet 1 - Fencing off dams & gullies

## Protecting your water resources

### Issues

- dam and stream-bank erosion
- poor water quality (mud, dung, urine & other nutrients)
- algal blooms
- stock losses (in mud and steep gullies)
- higher evaporation rates on exposed dams
- shrinking water-holding capacity in silted-up dams
- difficult to move & control stock if gullies are unfenced



### Actions

- fence-off gullies, streams and dams
- install stock crossings
- install troughs
- non-permanent landholders can fence off three sides of a dam and install a rock or concrete race into the water
- replant using indigenous species for shade and shelter (*Fact sheet 4*)
- consider further evaporation control strategies (*Fact sheet 3*)

## Fact Sheet 1 - Fencing off dams & gullies

### Costs (approximate, as at December 2008):

- fencing: \$5-8 per metre
- troughs & fittings: \$500 each
- stock crossings: \$1000 each
- indigenous plants (tubestock): \$1 each
- pest & weed control
- *funding and other assistance is available through BCLN*



Photo: Jenny O'Sullivan

### Resources & links to other information

- "Stock and waterways: a manager's guide" ([land&wateraustralia@lwa.gov.au](mailto:land&wateraustralia@lwa.gov.au))
- Sibly case study (BCLN)
- BCLN Fact sheet 2 (Capturing more water)
- BCLN Fact sheet 3 (Evaporation & seepage)
- BCLN Fact sheet 4 (Revegetation)

### Benefits

- better water quality
- prevent erosion
- reduce evaporation
- increase water storage capacity
- save money on cleaning dams
- reduce stock losses
- reduce algal blooms
- improve stock control
- reduce fertiliser loss via run-off
- better pasture management
- increased biodiversity
- encourage natural pest & weed control
- shade & shelter for stock
- stock with access to clean water are healthier, gain weight quicker, produce more milk, & emit less methane