

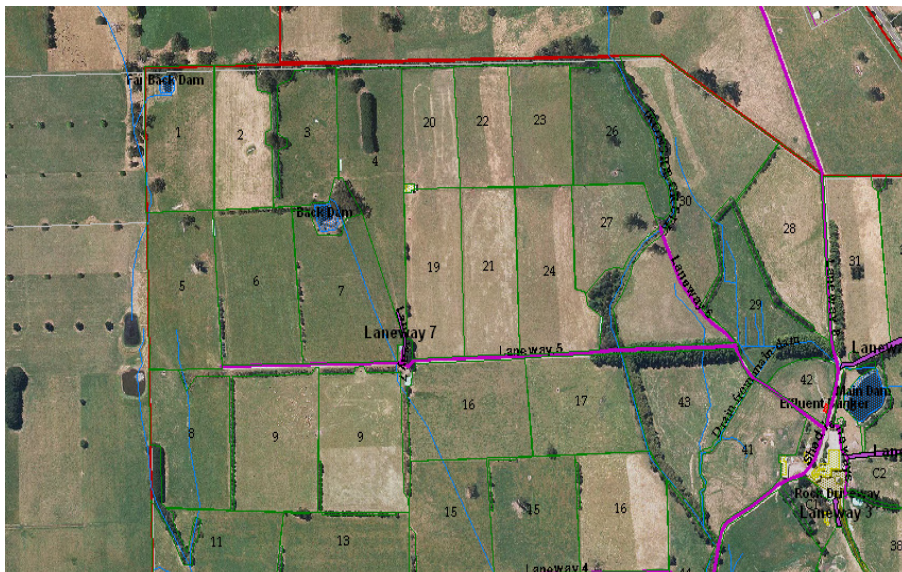


**Demonstrating
Sustainable
FARM PRACTICES**

iFarm- Dividing up the Farm Course.

What is iFarm?

iFarm is a farm mapping and planning program utilising the latest aerial imagery of your property and GIS software. You will learn how to map paddocks, infrastructure, waterways, tracks, native vegetation, pipelines, fencing and more.



What will be the involvement of you, the landowner?

Attendance at 3 workshop sessions over 3 hours.

Cost.

\$77 (inc. GST) per property. Includes supper, software, aerial imagery and computer set up support.

Time: 6.30pm- 9.30pm

Dates: May 4th, 11th and 18th.

Location: Korumburra Library Meeting Room, 165 Commercial Street, Korumburra, 3950

To register please contact Jill Vella from South Gippsland Landcare Network by Friday 21st April on 03 5662 5759 or JillV@wgcma.vic.gov.au



AGRICULTURE VICTORIA



This project is supported by Bass Coast Landcare Network and South Gippsland Landcare Network through funding from the Australian Government's National Landcare Programme